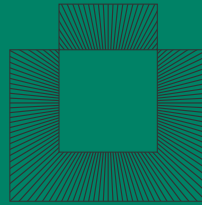


WetPlane 60

WP60 — LED
62 mm x 84/116 mm



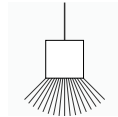
LIGHT FORMS

Exterior

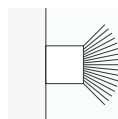
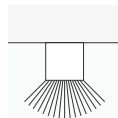
Specification



Suspended



Surface/ Wall



Features

IP-65 Rated for Use in Wet Locations

Individual Fixture upto 5 metres in Length

Direct or Direct/Indirect Distribution

Up to 3239 LM/M and 73 LM/W

Four Standard Output Options

Tunable White and RGB+W Options

Integral DALI, DMX, 10V or Phase Driver

Dimming Down to 0%

Remote Sensor Options

Aluminium, White, Black, Bronze or Custom RAL Finish

Photometry and additional documentation at:
LightForms.com/products/exterior/wetplane-60/

WP60 — Suspended, Surface, Wall

INSTRUCTIONS

Digital users: Check selection boxes and fill in fields directly in fillable, interactive PDF, save file, submit to Light Forms.
Manual users: Check selection boxes and fill in fields with pen, scan and save ALL pages as PDF document, submit to Light Forms.

1 Base model / mounting Select ONE

- WP60S Suspended
- WP60W Wall (with rotatable mounting bracket, see page 4)
- WP60SM Surface-Mount (direct only)

2 Size* Specify length(s) in metres, ex: 3.75

Length

3 Direct linear lamping & lens Select NONE or ONE from EVERY category (note exceptions below)

- | Output | CRI | CCT | Lens | |
|------------------------------------|-----------------------------|--------------------------------|---------------------------------|-----------------------|
| <input type="checkbox"/> MIN | <input type="checkbox"/> 80 | <input type="checkbox"/> 2700K | <input type="checkbox"/> DIFF/F | Diffuse, flush (std.) |
| <input type="checkbox"/> LOW | <input type="checkbox"/> 90 | <input type="checkbox"/> 3000K | | |
| <input type="checkbox"/> MED | | <input type="checkbox"/> 3500K | | |
| <input type="checkbox"/> HIQ | | <input type="checkbox"/> 4000K | | |
| <input type="checkbox"/> TUNE/LOW* | | <input type="checkbox"/> 5000K | | |
| <input type="checkbox"/> TUNE/MED* | | <input type="checkbox"/> 6500K | | |
| <input type="checkbox"/> RGBW^ | | | | |

¶If selecting any indirect output below, HI is NOT an option here for direct. Max output for direct/indirect is MED/MED.

*For TUNE/LOW and TUNE/MED, CRI and CCT do not apply (leave unchecked).

^For RGBW, CRI does not apply (leave unchecked) and select 3000K or 4000K CCT only. White LEDs can remain uncommissioned for RGB-only output.

4 Direct linear lamping & lens Select NONE or ONE from EVERY category (note exceptions below)

NONE Select when specifying an DIRECT-ONLY fixture; indirect not available for surface mount

- | Output | CRI | CCT | Lens | |
|------------------------------------|-----------------------------|--------------------------------|---------------------------------|-----------------------|
| <input type="checkbox"/> MIN | <input type="checkbox"/> 80 | <input type="checkbox"/> 2700K | <input type="checkbox"/> DIFF/F | Diffuse, flush (std.) |
| <input type="checkbox"/> LOW | <input type="checkbox"/> 90 | <input type="checkbox"/> 3000K | <input type="checkbox"/> Frost | Semi-frosted, flush |
| <input type="checkbox"/> MED | | <input type="checkbox"/> 3500K | | |
| <input type="checkbox"/> TUNE/LOW* | | <input type="checkbox"/> 4000K | | |
| <input type="checkbox"/> TUNE/MED* | | <input type="checkbox"/> 5000K | | |
| <input type="checkbox"/> RGBW^ | | <input type="checkbox"/> 6500K | | |

*For TUNE/LOW and TUNE/MED, CRI and CCT do not apply (leave unchecked).

^For RGBW, CRI does not apply (leave unchecked) and select 3000K or 4000K CCT only. White LEDs can remain uncommissioned for RGB-only output.

WP60 — Suspended, Surface

5 Integral driver* Select ONE

- NONDIM** Non-dimming
- DALI#** DALI driver, dimming down to 1%
- 1/10V** 1-10V, dimming down to 1%
- 0/10V** 0-10V, dimming down to 0%
- DMX^** DMX driver, dimming down to 1%
- PHASE** For use with phase-cut triac, IGBT or sine wave dimmer switches

#DALI is required for use with TUNE/LOW and TUNE/MED; DALI (or DMX) is required for RGBW

^DMX (or DALI) is required for use with RGBW

6 Finish* Select ONE

- AL** Anodised aluminium (standard)
- WH** White powdercoat
- BLK** Black powdercoat
- BZ** Metallic bronze powdercoat
- RAL/ _____** Custom RAL# colour powdercoat, ex: RAL/3000

*Contact factory for additional finish options including Interpon, Farrow & Ball and silver and gold plating

7 Powerfeed colour Select ONE

- GP** Grey (standard for suspended, default for other mountings)
- WP** White
- BP** Black
- TP** Transparent
- XP** Custom colour (contact Light Forms for options)

WP60 — Suspended, Surface

8

Optional add-ons

Select as many as apply

A

EMERGENCY

EM

Remote, 3-hour emergency battery, manual testing

EM/DALI

Remote, 3-hour emergency battery with DALI interface, automatic testing

EC

Emergency circuit

B

SENSOR

PRES

Remote, PIR presence detector

DALI/PRES

Remote, DALI-compatible PIR presence detector

PHOTO

Remote, photocell/daylight detector

C

WIRELESS CONTROL

OLP*

Remote, Osram Lightify Pro wireless control module

*Must choose DALI option in DRIVER section.

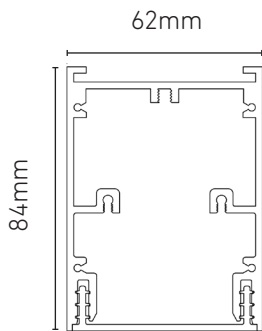
WetPlane 60

LIGHT FORMS

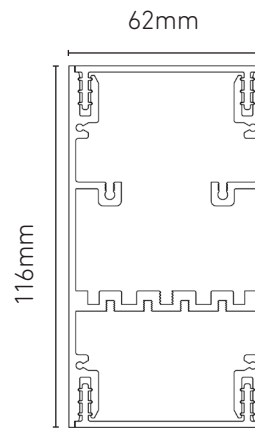
WP60 — Suspended, Surface

Dimensions

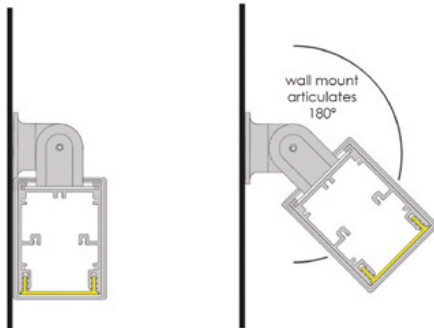
Direct only



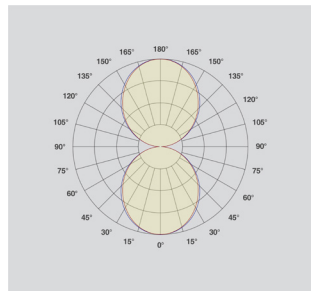
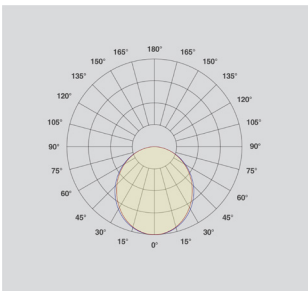
Direct / Indirect



Wall Mount



Distribution



WetPlane 60

LIGHT FORMS

WP60 — Suspended, Surface

Linear lighting – options & performance data*

Output Options	Delivered Lumens LM	Watts W	Efficacy LM/W	CRI Options	CCT Options	Weight G
MIN	648	12	54	80 90	2700K 3000K 3500K 4000K 5000K 6500K	DIFF/F
LOW	927	13.4	72			
MED	1807	25	72			
HI	3239	44.6	73			
TUNE/LOW	Tunable White Standard 744 (at 4000K)	14	53	80	2700K-6500K	DIFF/F
TUNE/HIGH	Tunable White High 1054 (at 4000K)	22	48	80	2700K-6500K	
RGBW	System - N/A	N/A (entire system) 9 (white only)	N/A (entire system) 24 (white only)	N/A (entire system) 80 (white only)	3000K 4000K	

L80 > 50,000 hours

Luminous flux +/- 5%

*Data provided is for either direct OR indirect distribution; performance values are the same for both.

#Performance data is based on a connected-load photometric test of MED output with 80 CRI at 4000K using a DALI driver and DIFF lens. Data values for all other outputs are extrapolations.

^Performance data is extrapolated based on a 4000K setting. Cooler and warmer CCT settings will provide a slight decrease in performance - lower lm/m, higher W/m, and lower lm/W.

LENS options

DIFF is a white satin diffuser lens that produces smooth, even light across the lens surface.



WetPlane 60

LIGHT FORMS

WP60 — Suspended, Surface

Housing

100% recyclable, extruded architectural grade aluminium with minimum 2mm thickness.

Finish options

Silver, White, Black, Bronze or custom RAL powdercoat. Contact Light Forms for other finish options (Interpon, Farrow & Ball, and silver and gold plating).



Warranty

5-year limited warranty.

Manufacturing & certification

Products are manufactured in and comply with the health, safety and environmental protection standards of the respective region in which they are sold.



Europe



United Kingdom



Greater India and Middle East

Suspension mount hardware

Adjustable, cable bullet, cable gripper and aircraft cable provide for each suspension point.

Remote sensors

Optional, presence (PRES), DALI-compatible PIR presence (DALI/PRES) and daylight harvesting (PHOTO) sensors available. Contact Light Forms for further information.

Weight

Approximately 3700 (direct-only) or 4900 (direct/Indirect) grams per linear metre. Weight will increase with the addition of batteries and may vary further depending on mounting and other options.

Operating temperature

Luminaire MUST be installed and operated ONLY in dry or damp environments where the ambient temperature ranges from -20°C to 50°C. Luminaire operation in environments outside this temperature range voids the warranty AND may damage the product or adversely impact lamp life, lumen output and colour consistency.