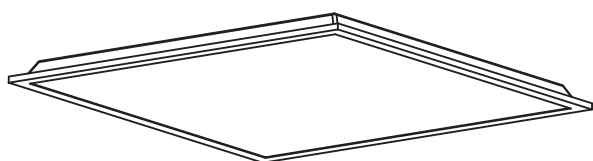


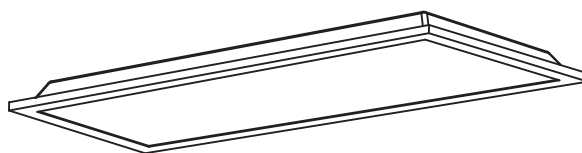
Panel 6060 and 30120

Installation / Maintenance Instructions

LIGHT FORMS



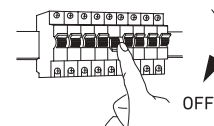
PA-00001
PA-00002
PA-00003



PA-00004
PA-00005
PA-00006

Precautions and Warnings

- Read all instructions carefully, the safety of this product is only guaranteed if the instructions are followed, retain these instructions for future use.
- Turn off the power supplier before installation and maintenance.
- Installation must be carried out by a trained professional in accordance with all National electrical codes and regulations.
- To avoid the risk of fire and overheating, make sure all connection, including those made by others, are correct and secure.
- Do not pinch or apply excessive tension on the electrical wires. Damage due to improper handling and installation will void the warranty.
- If there is any damage to the product or the cable, the product must be returned to the retailer or manufacturer.



Luminaire Details

Power Supply:	230V AC 50Hz
IP Rating:	IP40
Class:	
Ta Max:	40°C

Fixing Method:	Lay-in and Recessed Suspended and Surface mount
Bezel Dimensions:	595x595mm
Recess Depth:	32mm
Ceiling cutout	570x570mm
Ceiling Thickness range:	1-22mm

Light Forms
UK Head Office

LightForms.com

8 Richfield Avenue
Reading
RG1 8EQ

T +44 (0)20 8571 3785
E London@
LightForms.com

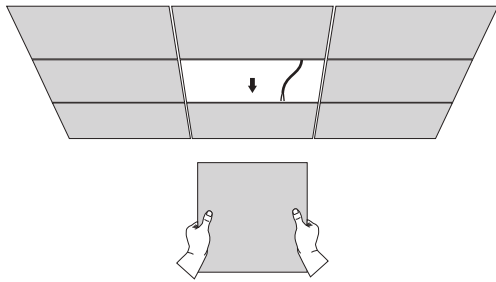
Panel 6060 and 30120

Installation / Maintenance Instructions

LIGHT FORMS

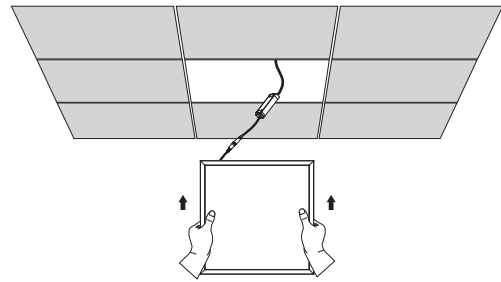
1 Lay-in

Remove ceiling tile and feed down AC supply.



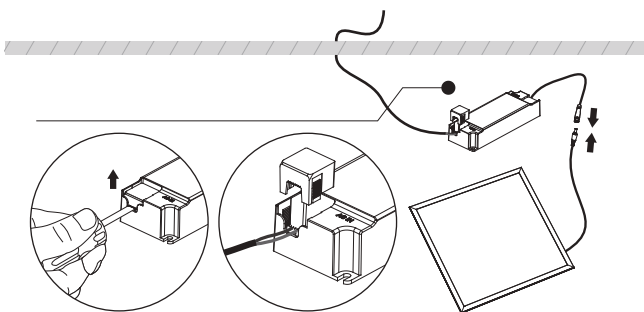
3

Instal the luminaire into the ceiling.



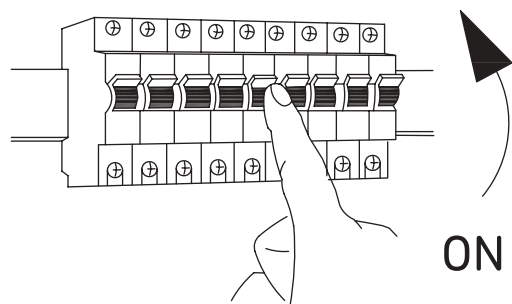
2

Make electrical connections into the remote driver.



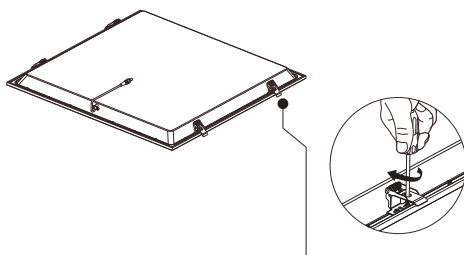
4

Turn on power



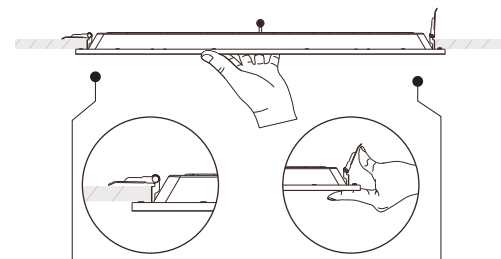
1 Recessed

Attached spring clips to the luminaire bezel.



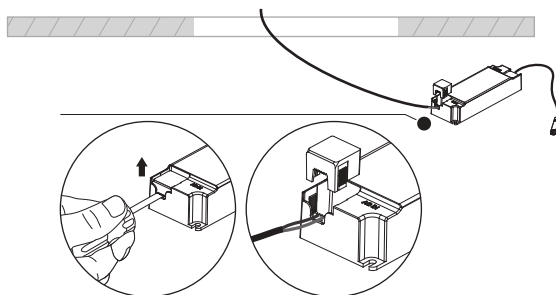
3

Instal the luminaire into the ceiling.



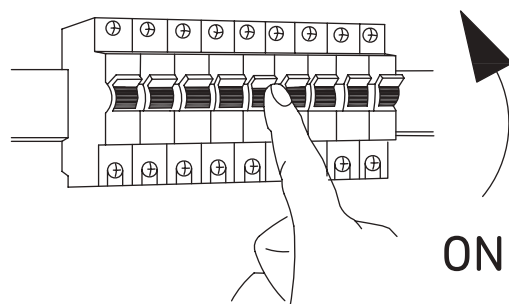
2

Make electrical connections into the remote driver.



4

Turn on power



Light Forms
UK Head Office

LightForms.com

8 Richfield Avenue
Reading
RG1 8EQ

T +44 (0)20 8571 3785
E London@
LightForms.com

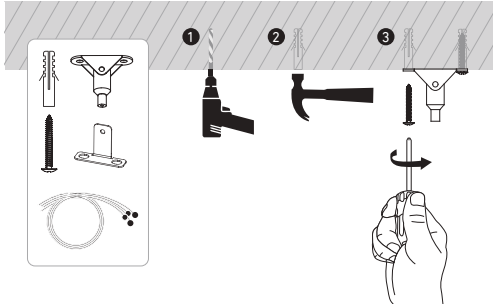
Panel 6060 and 30120

Installation / Maintenance Instructions

LIGHT FORMS

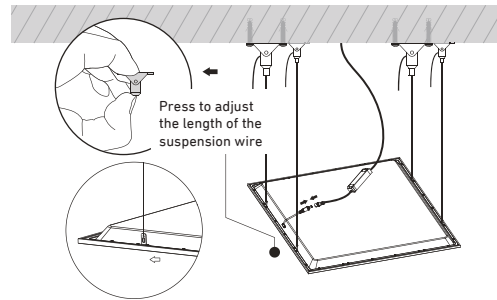
1 Suspended

Attach 4 ceiling brackets.



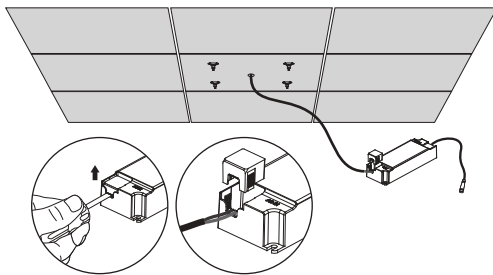
3

Install the luminaire onto the ceiling.



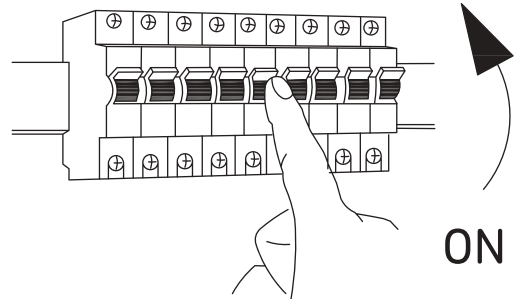
2

Make electrical connections into the remote driver.



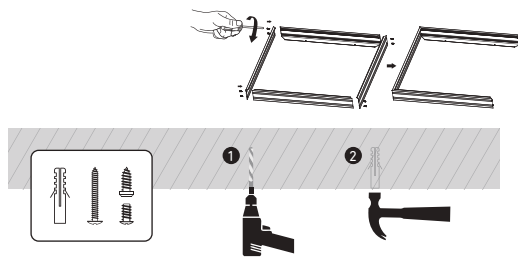
4

Turn on power



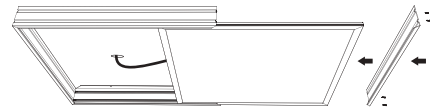
1 Surface Mount

Use the frame to mark fixing points on the ceiling, and drill holes for suitable fixings.



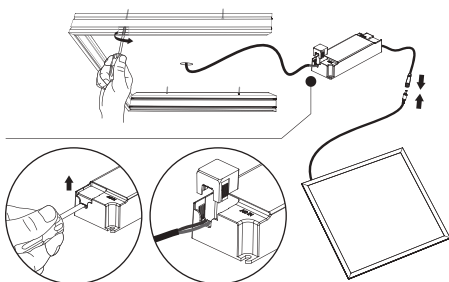
3

Connect the panel to the driver and slide into the frame. Install final frame side.



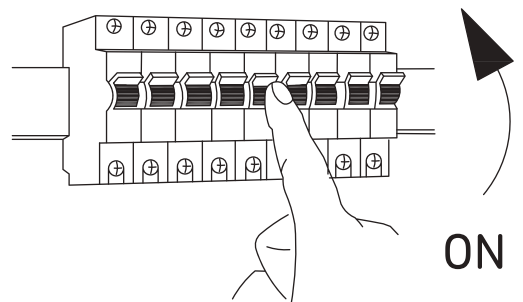
2

Fix the frame to the ceiling. Connect the driver



4

Turn on power



Light Forms
UK Head Office

LightForms.com

8 Richfield Avenue
Reading
RG1 8EQ

T +44 (0)20 8571 3785
E London@
LightForms.com